

THE TOWER AT
FRISCO SQUARE



5757 Main Street | Frisco, Texas 75034

THE TOWER AT FRISCO SQUARE



PELWEL
pie five PIZZA CO.
MOOYAH
FREEBIRDS WORLD BURRITO

MAIN EVENT ENTERTAINMENT

IHOP RESTAURANT

COMFORT SUITES

Rudys

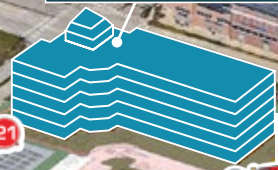
BLUE GOOSE RESTAURANT

cream

fruitealicious
Real fruit smoothies. Real good.

LONDONER

THE TOWER AT FRISCO SQUARE



BURGER 21

ZUZU

Rocky Top

FIREHOUSE SUBS
FOUNDED BY FIREMEN



THREE SQUARES

CINEMARK
The Best Seat in Town

Best That
arella's

GoGo Burger

JAKES UPTOWN

barre3
Sake Toro Sushi

NOLA

DIMPLES
CUPCAKE FACTORY

RESTAURANT
TESTA

extracts

FRISCO
Frisco Library

UNITED STATES
POSTAL SERVICE

LOCATION

Frisco Square, a 147-acre lifestyle destination, is located in the heart of Dallas-Fort Worth's fastest growing suburban communities, as ranked by Forbes, CNN and the Dallas Business Journal. The development offers a variety of opportunities for office, retail, residential and municipal tenants that desire a live-work-play environment.

Completed in 2015, Frisco Square boasts some of the most unique features and amenities north of President George Bush Tollway.

The Tower at Frisco Square is a brand new Class A office tower located at the southeast corner of Main Street and World Cup way, near Frisco City Hall. The pedestrian friendly development offers ground floor retail and is surrounded by several restaurants, hotels and high-profile venues like Toyota Stadium.

BUILDING OVERVIEW

- Desirable Frisco address on Main Street
- Convenient access to Dallas North Tollway
- Exceptional location with access to on-site and nearby retail boutiques and restaurants such as Cinemark Frisco Square, Burger 21, Mattito's Tex-Mex, Babe's Chicken House and Jake's Hamburgers
- Visitor drop-off area by front lobby
- State-of-the-art construction
- On-site fitness center
- Constructed by Andres Construction
- Architectural design by O'Brien & Associates

SECOND FLOOR PLAN



BUILDING HIGHLIGHTS

Building size: 166,305 RSF

Typical floor plate: 31,780 RSF

Number of floors: 5 floors

Total parking ratio: 4:1,000 RSF

Floor-to-floor ceiling height: 15 feet



For office leasing
information, contact:

Jeff Eckert, CCIM
214.438.6153
jeff.eckert@am.jll.com

James Esquivel
214.438.6152
james.esquivel@am.jll.com

Ashley Curry
214.438.6348
ashley.curry@am.jll.com

Professionally developed and owned by:



© 2016 Jones Lang LaSalle IP, Inc. All rights reserved. The information contained in this document is proprietary to Jones Lang LaSalle and shall be used solely for the purposes of evaluating this proposal. All such documentation and information remains the property of Jones Lang LaSalle and shall be kept confidential. Reproduction of any part of this document is authorized only to the extent necessary for its evaluation. It is not to be shown to any third party without the prior written authorization of Jones Lang LaSalle. All information contained herein is from sources deemed reliable; however, no representation or warranty is made as to the accuracy thereof.