



# Demographic and Income Profile

Gov Point, Cincinnati, OH  
 Governors Way, Cincinnati, Ohio, 45249  
 Ring: 3 mile radius

Prepared by Esri  
 Latitude: 39.29053  
 Longitude: -84.31065

Summary	Census 2010	2015	2020
Population	60,929	62,059	63,435
Households	23,579	24,162	24,729
Families	16,612	16,731	16,941
Average Household Size	2.58	2.56	2.56
Owner Occupied Housing Units	16,867	16,703	17,040
Renter Occupied Housing Units	6,712	7,460	7,689
Median Age	38.1	39.0	39.8
Trends: 2015 - 2020 Annual Rate	Area	State	National
Population	0.44%	0.21%	0.75%
Households	0.46%	0.25%	0.77%
Families	0.25%	0.03%	0.69%
Owner HHs	0.40%	0.19%	0.70%
Median Household Income	2.91%	2.86%	2.66%

Households by Income	2015		2020	
	Number	Percent	Number	Percent
<\$15,000	1,335	5.5%	1,102	4.5%
\$15,000 - \$24,999	1,260	5.2%	837	3.4%
\$25,000 - \$34,999	1,177	4.9%	923	3.7%
\$35,000 - \$49,999	2,394	9.9%	1,951	7.9%
\$50,000 - \$74,999	4,373	18.1%	3,991	16.1%
\$75,000 - \$99,999	3,671	15.2%	3,977	16.1%
\$100,000 - \$149,999	4,804	19.9%	5,635	22.8%
\$150,000 - \$199,999	2,528	10.5%	3,297	13.3%
\$200,000+	2,620	10.8%	3,016	12.2%
Median Household Income	\$83,726		\$96,627	
Average Household Income	\$109,384		\$124,228	
Per Capita Income	\$42,847		\$48,722	

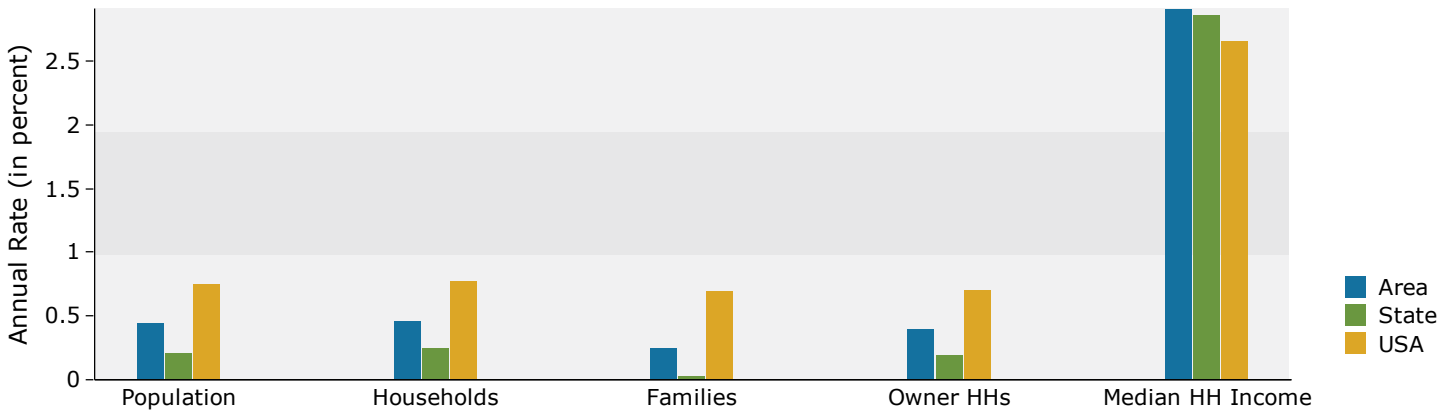
Population by Age	Census 2010		2015		2020	
	Number	Percent	Number	Percent	Number	Percent
0 - 4	3,899	6.4%	3,683	5.9%	3,713	5.9%
5 - 9	4,592	7.5%	4,135	6.7%	3,924	6.2%
10 - 14	4,819	7.9%	4,805	7.7%	4,390	6.9%
15 - 19	4,206	6.9%	4,251	6.8%	4,275	6.7%
20 - 24	2,919	4.8%	3,567	5.7%	3,294	5.2%
25 - 34	7,442	12.2%	7,382	11.9%	7,964	12.6%
35 - 44	8,847	14.5%	8,183	13.2%	8,507	13.4%
45 - 54	10,184	16.7%	9,594	15.5%	8,634	13.6%
55 - 64	7,354	12.1%	8,581	13.8%	9,174	14.5%
65 - 74	3,678	6.0%	4,699	7.6%	5,883	9.3%
75 - 84	2,175	3.6%	2,224	3.6%	2,615	4.1%
85+	817	1.3%	957	1.5%	1,062	1.7%

Race and Ethnicity	Census 2010		2015		2020	
	Number	Percent	Number	Percent	Number	Percent
White Alone	51,181	84.0%	50,760	81.8%	50,338	79.4%
Black Alone	2,403	3.9%	2,632	4.2%	2,897	4.6%
American Indian Alone	74	0.1%	72	0.1%	75	0.1%
Asian Alone	5,158	8.5%	6,166	9.9%	7,262	11.4%
Pacific Islander Alone	76	0.1%	74	0.1%	76	0.1%
Some Other Race Alone	833	1.4%	952	1.5%	1,117	1.8%
Two or More Races	1,204	2.0%	1,403	2.3%	1,670	2.6%
Hispanic Origin (Any Race)	2,215	3.6%	2,596	4.2%	3,089	4.9%

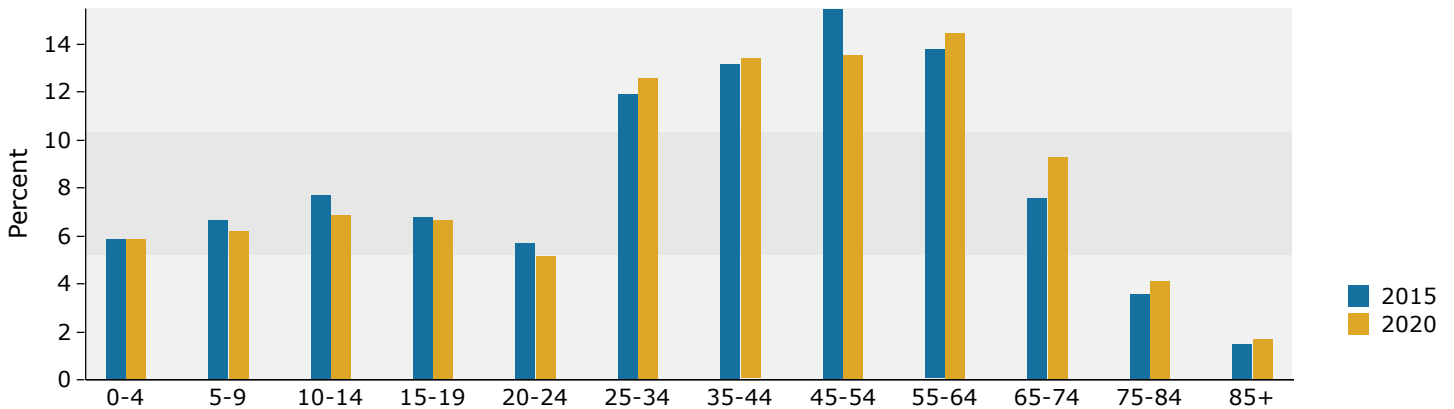
**Data Note:** Income is expressed in current dollars.

**Source:** U.S. Census Bureau, Census 2010 Summary File 1. Esri forecasts for 2015 and 2020.

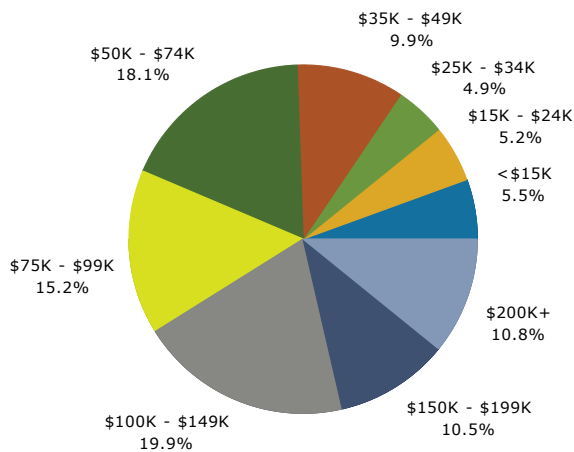
## Trends 2015-2020



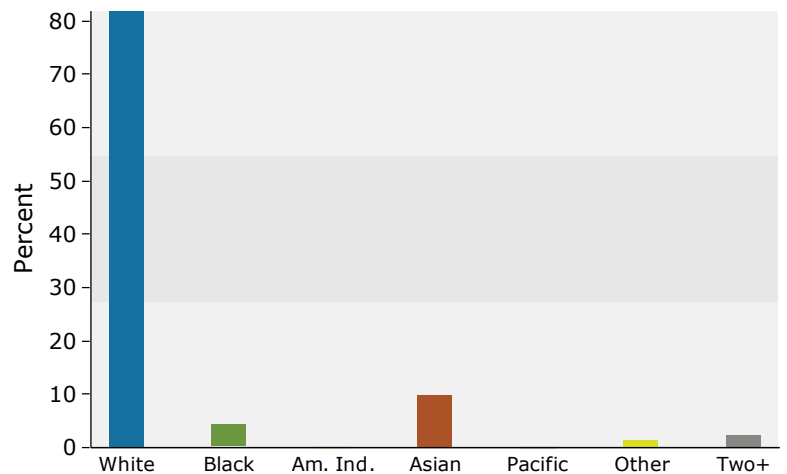
## Population by Age



## 2015 Household Income



## 2015 Population by Race



2015 Percent Hispanic Origin: 4.2%



# Demographic and Income Profile

Gov Point, Cincinnati, OH  
 Governors Way, Cincinnati, Ohio, 45249  
 Ring: 5 mile radius

Prepared by Esri  
 Latitude: 39.29053  
 Longitude: -84.31065

Summary	Census 2010	2015	2020
Population	135,290	137,641	140,677
Households	51,974	53,183	54,420
Families	37,478	37,759	38,279
Average Household Size	2.59	2.57	2.57
Owner Occupied Housing Units	39,756	39,640	40,481
Renter Occupied Housing Units	12,217	13,543	13,939
Median Age	39.9	40.8	41.7
Trends: 2015 - 2020 Annual Rate	Area	State	National
Population	0.44%	0.21%	0.75%
Households	0.46%	0.25%	0.77%
Families	0.27%	0.03%	0.69%
Owner HHs	0.42%	0.19%	0.70%
Median Household Income	3.17%	2.86%	2.66%

Households by Income	2015		2020	
	Number	Percent	Number	Percent
<\$15,000	2,668	5.0%	2,177	4.0%
\$15,000 - \$24,999	2,897	5.4%	1,911	3.5%
\$25,000 - \$34,999	2,759	5.2%	2,182	4.0%
\$35,000 - \$49,999	5,395	10.1%	4,384	8.1%
\$50,000 - \$74,999	9,206	17.3%	8,291	15.2%
\$75,000 - \$99,999	7,749	14.6%	8,417	15.5%
\$100,000 - \$149,999	10,615	20.0%	12,313	22.6%
\$150,000 - \$199,999	5,888	11.1%	7,769	14.3%
\$200,000+	6,006	11.3%	6,976	12.8%
Median Household Income	\$85,038		\$99,407	
Average Household Income	\$111,436		\$127,143	
Per Capita Income	\$43,069		\$49,187	

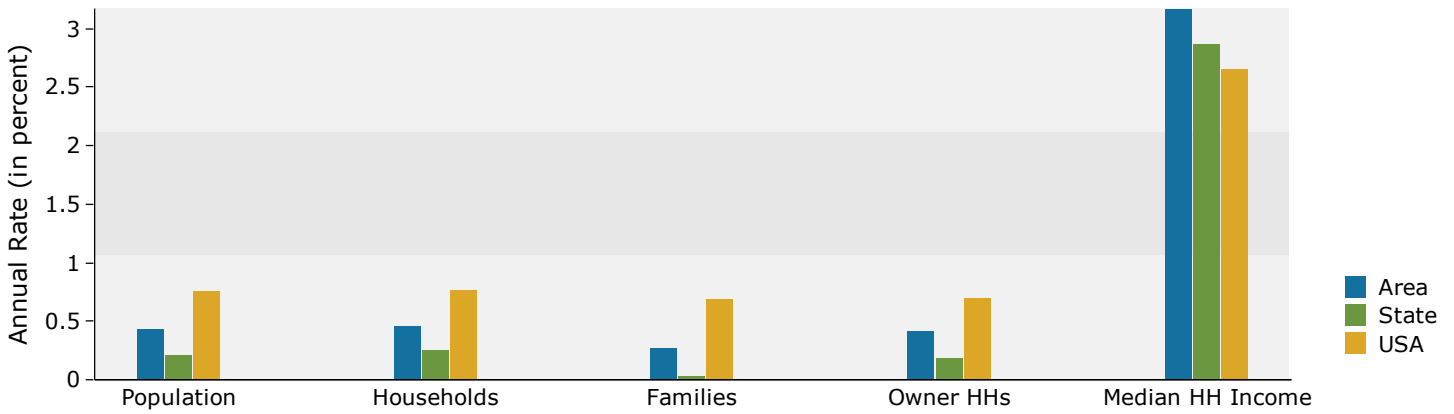
Population by Age	Census 2010		2015		2020	
	Number	Percent	Number	Percent	Number	Percent
0 - 4	8,298	6.1%	7,768	5.6%	7,759	5.5%
5 - 9	10,096	7.5%	9,101	6.6%	8,537	6.1%
10 - 14	10,684	7.9%	10,681	7.8%	9,822	7.0%
15 - 19	9,324	6.9%	9,383	6.8%	9,554	6.8%
20 - 24	5,975	4.4%	7,383	5.4%	6,781	4.8%
25 - 34	14,639	10.8%	14,871	10.8%	15,758	11.2%
35 - 44	19,263	14.2%	17,406	12.6%	17,944	12.8%
45 - 54	23,307	17.2%	21,542	15.7%	19,390	13.8%
55 - 64	17,064	12.6%	19,914	14.5%	21,232	15.1%
65 - 74	8,873	6.6%	11,340	8.2%	14,391	10.2%
75 - 84	5,514	4.1%	5,639	4.1%	6,642	4.7%
85+	2,255	1.7%	2,613	1.9%	2,865	2.0%

Race and Ethnicity	Census 2010		2015		2020	
	Number	Percent	Number	Percent	Number	Percent
White Alone	116,992	86.5%	116,464	84.6%	116,093	82.5%
Black Alone	4,928	3.6%	5,394	3.9%	5,955	4.2%
American Indian Alone	187	0.1%	192	0.1%	202	0.1%
Asian Alone	9,053	6.7%	10,809	7.9%	12,768	9.1%
Pacific Islander Alone	225	0.2%	233	0.2%	253	0.2%
Some Other Race Alone	1,482	1.1%	1,705	1.2%	2,015	1.4%
Two or More Races	2,423	1.8%	2,843	2.1%	3,392	2.4%
Hispanic Origin (Any Race)	4,335	3.2%	5,115	3.7%	6,129	4.4%

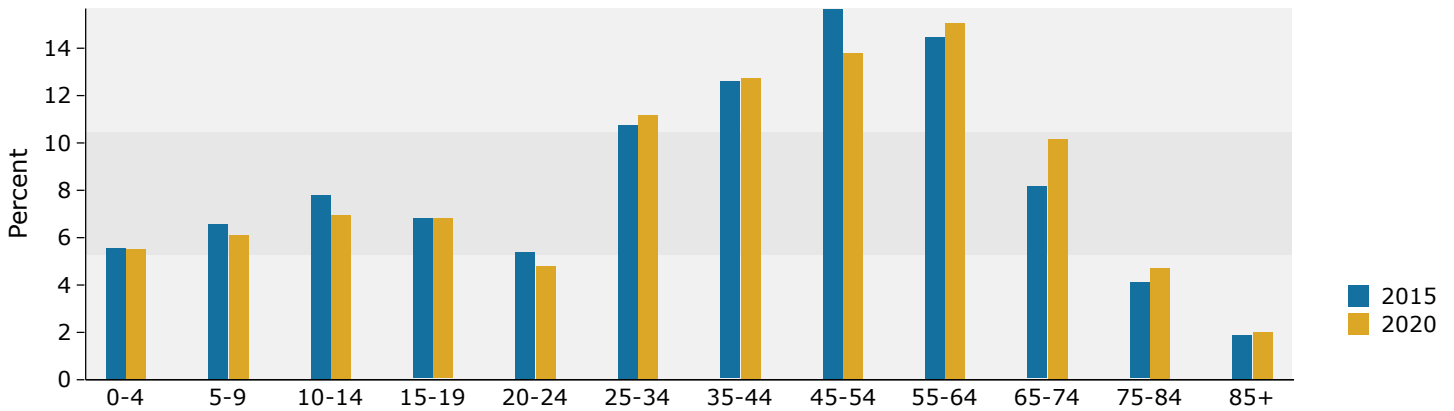
**Data Note:** Income is expressed in current dollars.

**Source:** U.S. Census Bureau, Census 2010 Summary File 1. Esri forecasts for 2015 and 2020.

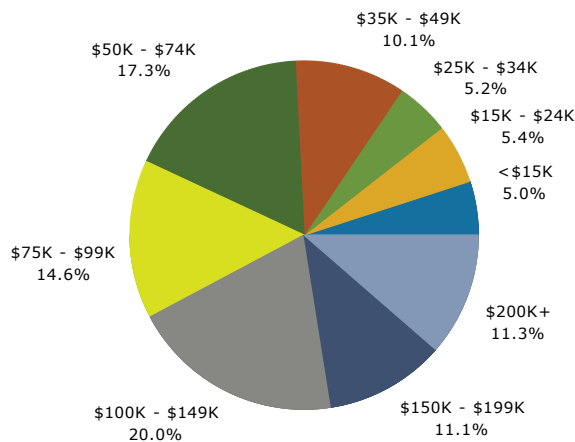
## Trends 2015-2020



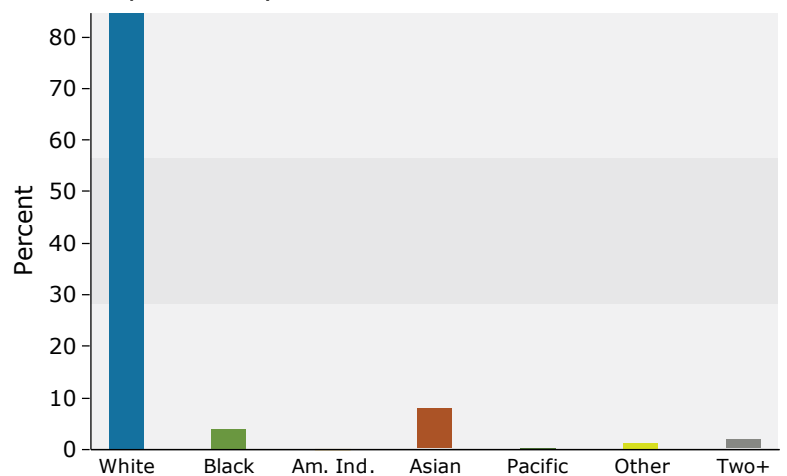
## Population by Age



## 2015 Household Income



## 2015 Population by Race



2015 Percent Hispanic Origin: 3.7%

Source: U.S. Census Bureau, Census 2010 Summary File 1. Esri forecasts for 2015 and 2020.



# Demographic and Income Profile

Gov Point, Cincinnati, OH  
 Governors Way, Cincinnati, Ohio, 45249  
 Ring: 7 mile radius

Prepared by Esri  
 Latitude: 39.29053  
 Longitude: -84.31065

Summary	Census 2010	2015	2020
Population	222,776	227,938	234,016
Households	84,482	86,759	89,059
Families	61,576	62,352	63,479
Average Household Size	2.62	2.61	2.61
Owner Occupied Housing Units	66,266	66,524	68,229
Renter Occupied Housing Units	18,216	20,235	20,830
Median Age	39.6	40.4	41.2
Trends: 2015 - 2020 Annual Rate	Area	State	National
Population	0.53%	0.21%	0.75%
Households	0.52%	0.25%	0.77%
Families	0.36%	0.03%	0.69%
Owner HHs	0.51%	0.19%	0.70%
Median Household Income	3.17%	2.86%	2.66%

Households by Income	2015		2020	
	Number	Percent	Number	Percent
<\$15,000	4,180	4.8%	3,395	3.8%
\$15,000 - \$24,999	4,876	5.6%	3,218	3.6%
\$25,000 - \$34,999	4,727	5.4%	3,703	4.2%
\$35,000 - \$49,999	8,812	10.2%	7,178	8.1%
\$50,000 - \$74,999	15,035	17.3%	13,744	15.4%
\$75,000 - \$99,999	12,338	14.2%	13,622	15.3%
\$100,000 - \$149,999	17,360	20.0%	20,416	22.9%
\$150,000 - \$199,999	9,377	10.8%	12,116	13.6%
\$200,000+	10,055	11.6%	11,666	13.1%
Median Household Income	\$84,886		\$99,204	
Average Household Income	\$112,061		\$127,451	
Per Capita Income	\$42,742		\$48,597	

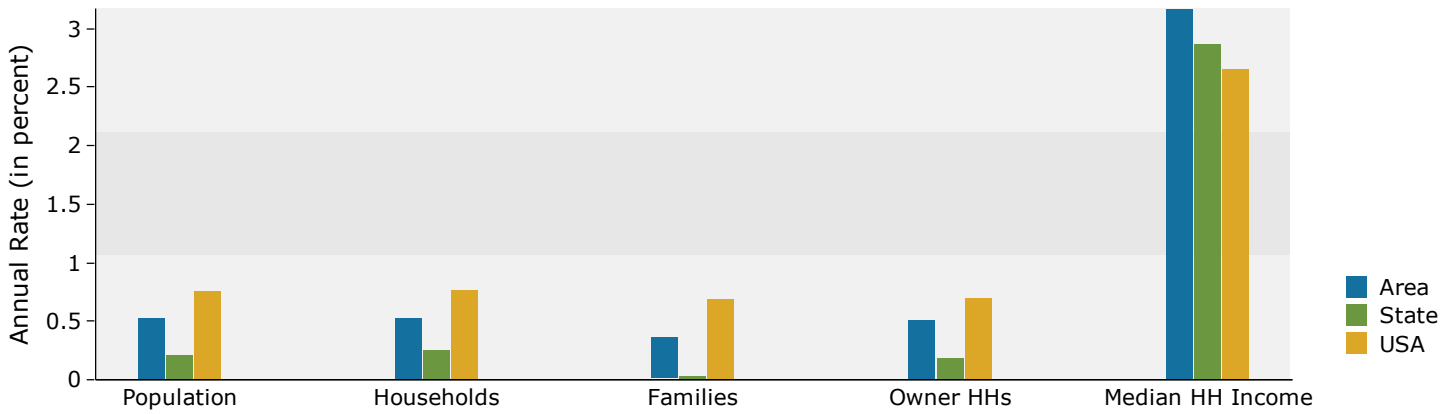
Population by Age	Census 2010		2015		2020	
	Number	Percent	Number	Percent	Number	Percent
0 - 4	13,993	6.3%	13,246	5.8%	13,315	5.7%
5 - 9	17,131	7.7%	15,756	6.9%	14,978	6.4%
10 - 14	18,020	8.1%	18,240	8.0%	17,234	7.4%
15 - 19	15,118	6.8%	15,596	6.8%	16,105	6.9%
20 - 24	9,341	4.2%	11,781	5.2%	10,891	4.7%
25 - 34	24,097	10.8%	24,147	10.6%	25,306	10.8%
35 - 44	32,201	14.5%	29,611	13.0%	30,941	13.2%
45 - 54	37,765	17.0%	35,413	15.5%	32,414	13.9%
55 - 64	27,746	12.5%	31,945	14.0%	33,791	14.4%
65 - 74	14,528	6.5%	18,666	8.2%	23,394	10.0%
75 - 84	9,090	4.1%	9,266	4.1%	10,956	4.7%
85+	3,746	1.7%	4,274	1.9%	4,692	2.0%

Race and Ethnicity	Census 2010		2015		2020	
	Number	Percent	Number	Percent	Number	Percent
White Alone	193,759	87.0%	194,152	85.2%	194,591	83.2%
Black Alone	8,362	3.8%	9,263	4.1%	10,353	4.4%
American Indian Alone	335	0.2%	357	0.2%	383	0.2%
Asian Alone	13,947	6.3%	16,720	7.3%	19,839	8.5%
Pacific Islander Alone	275	0.1%	291	0.1%	318	0.1%
Some Other Race Alone	2,206	1.0%	2,554	1.1%	3,008	1.3%
Two or More Races	3,893	1.7%	4,602	2.0%	5,524	2.4%
Hispanic Origin (Any Race)	6,774	3.0%	8,050	3.5%	9,691	4.1%

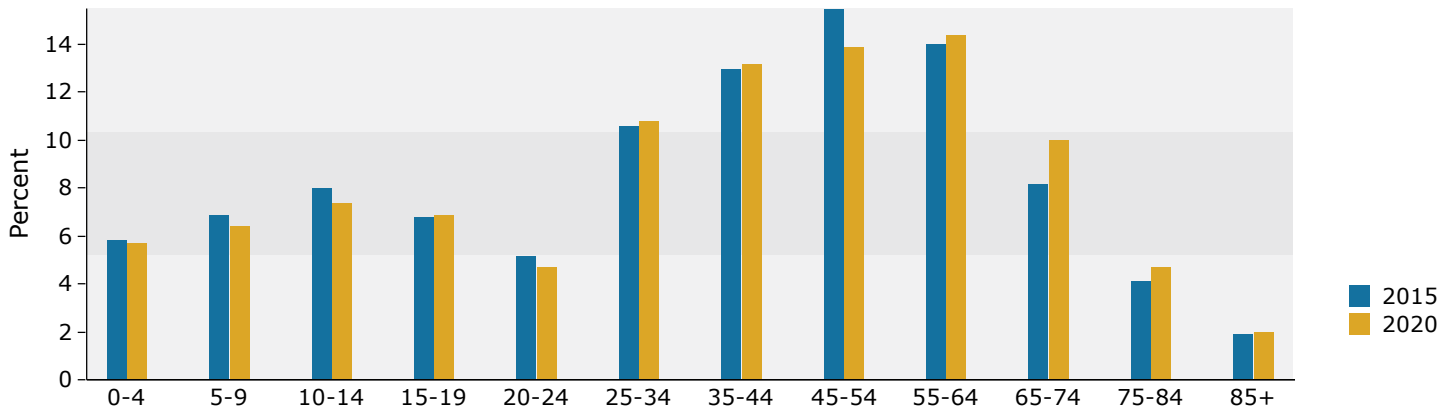
**Data Note:** Income is expressed in current dollars.

**Source:** U.S. Census Bureau, Census 2010 Summary File 1. Esri forecasts for 2015 and 2020.

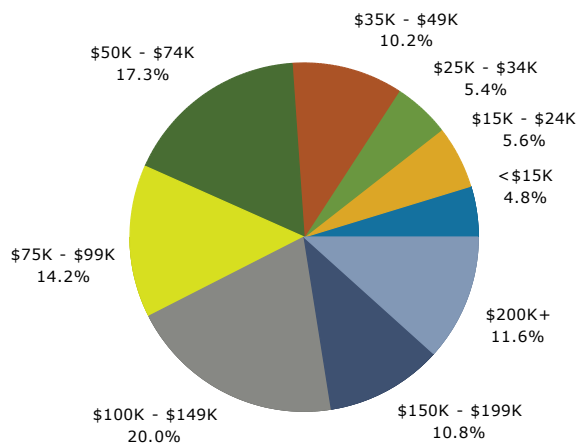
## Trends 2015-2020



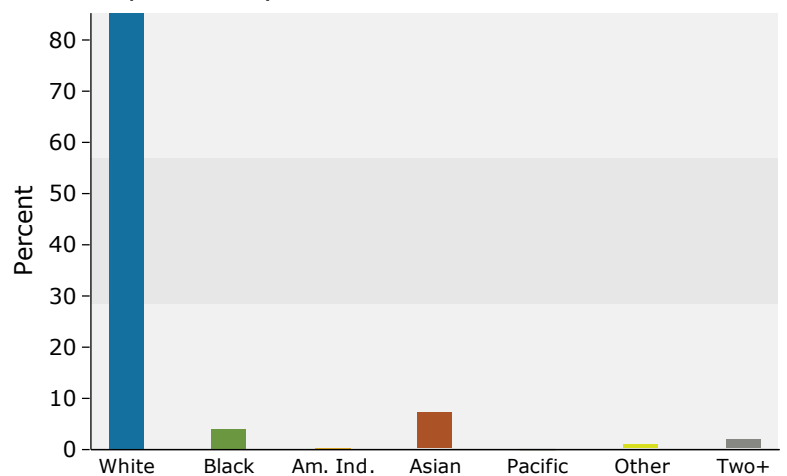
## Population by Age



## 2015 Household Income



## 2015 Population by Race



2015 Percent Hispanic Origin: 3.5%

Source: U.S. Census Bureau, Census 2010 Summary File 1. Esri forecasts for 2015 and 2020.